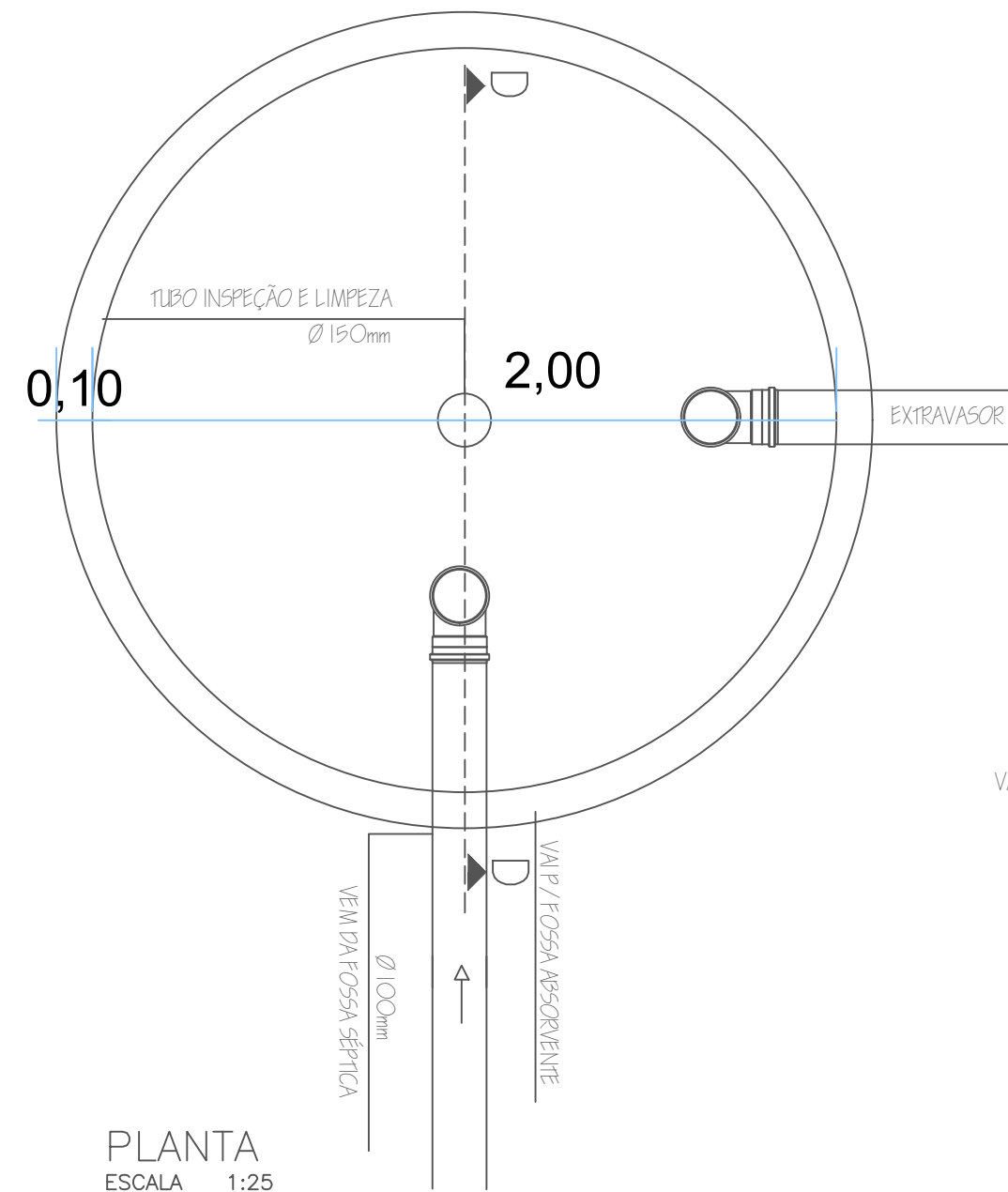
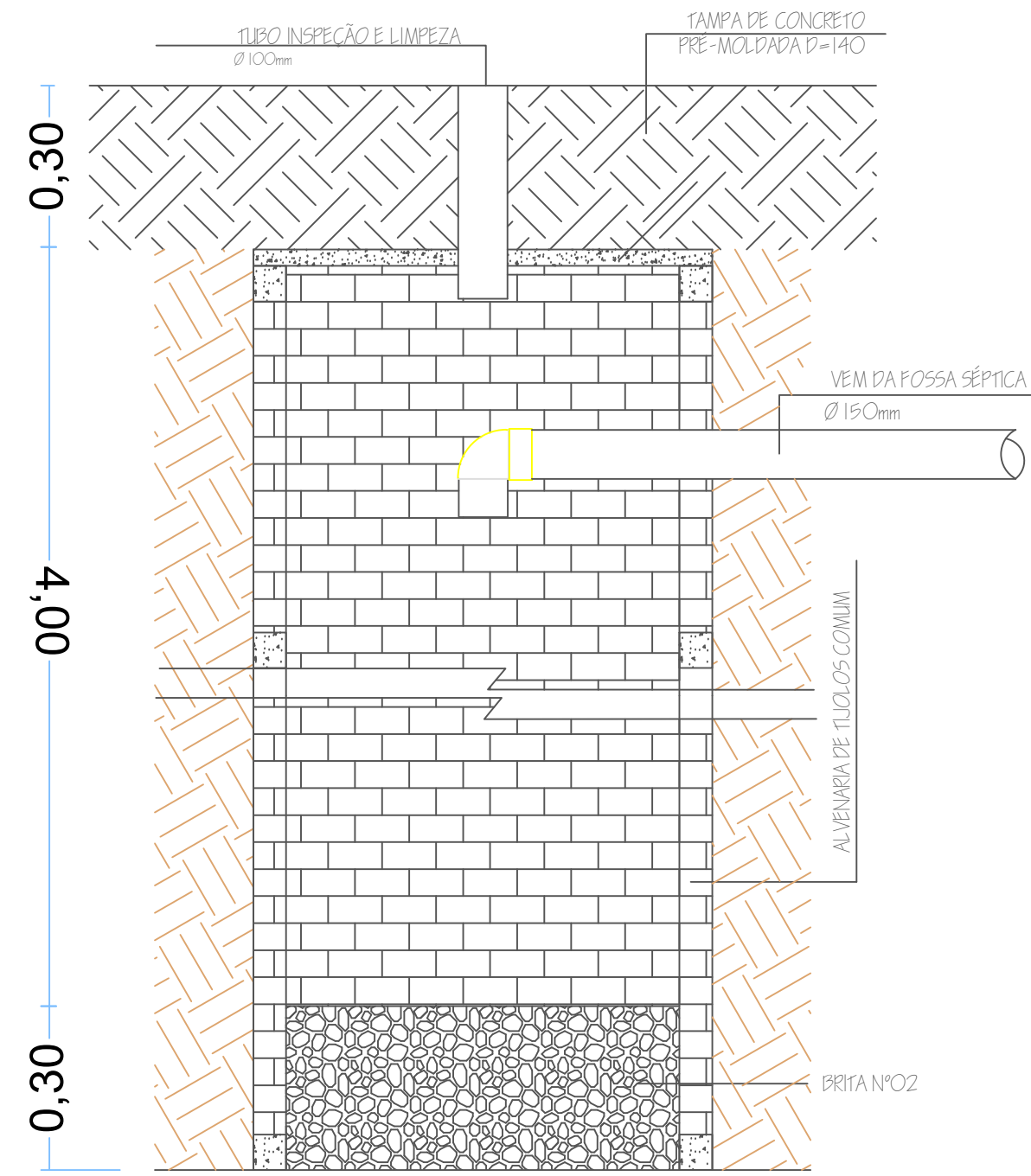


PLANTA DE LOCAÇÃO DE TUBULAÇÕES DE ESGOTO
Esc:.....1/50

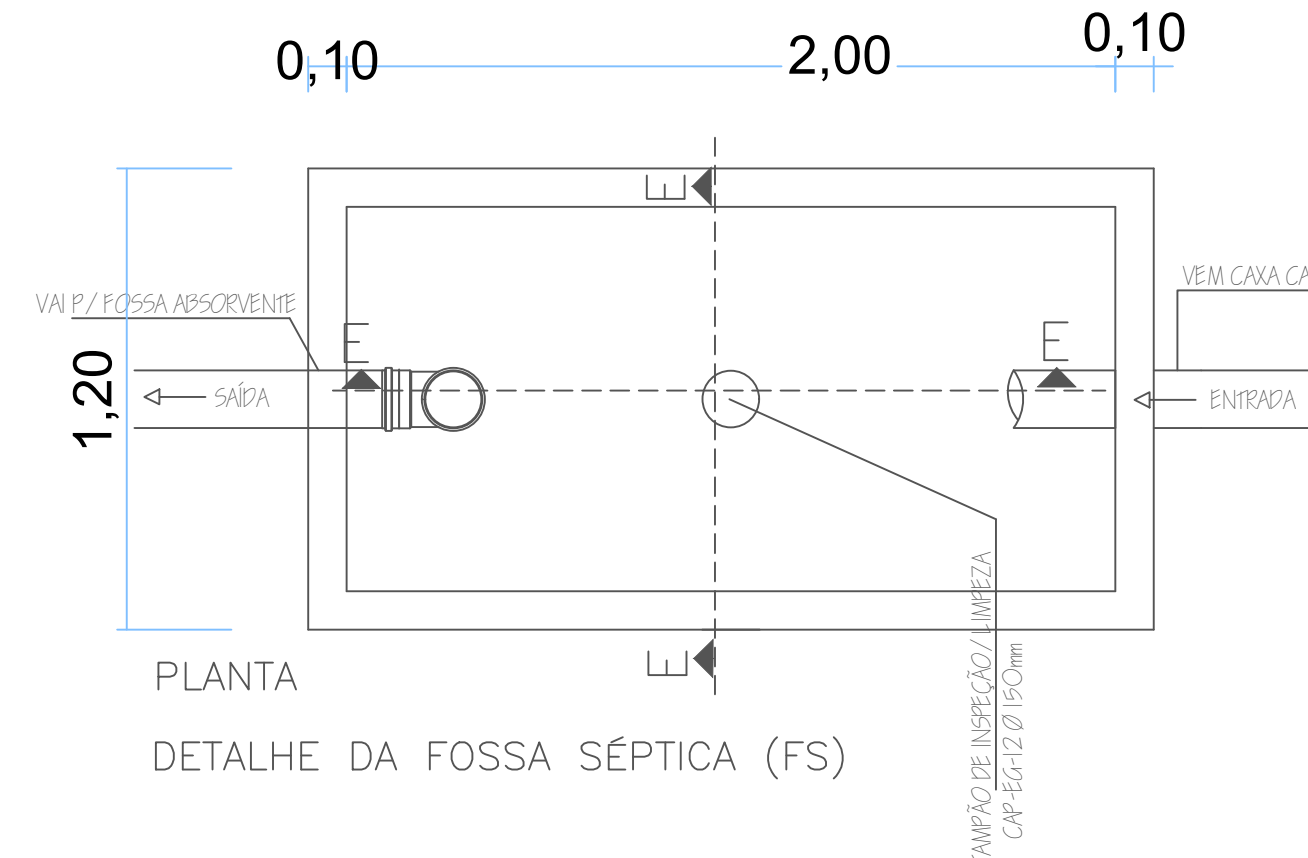


PLANTA
ESCALA 1:25



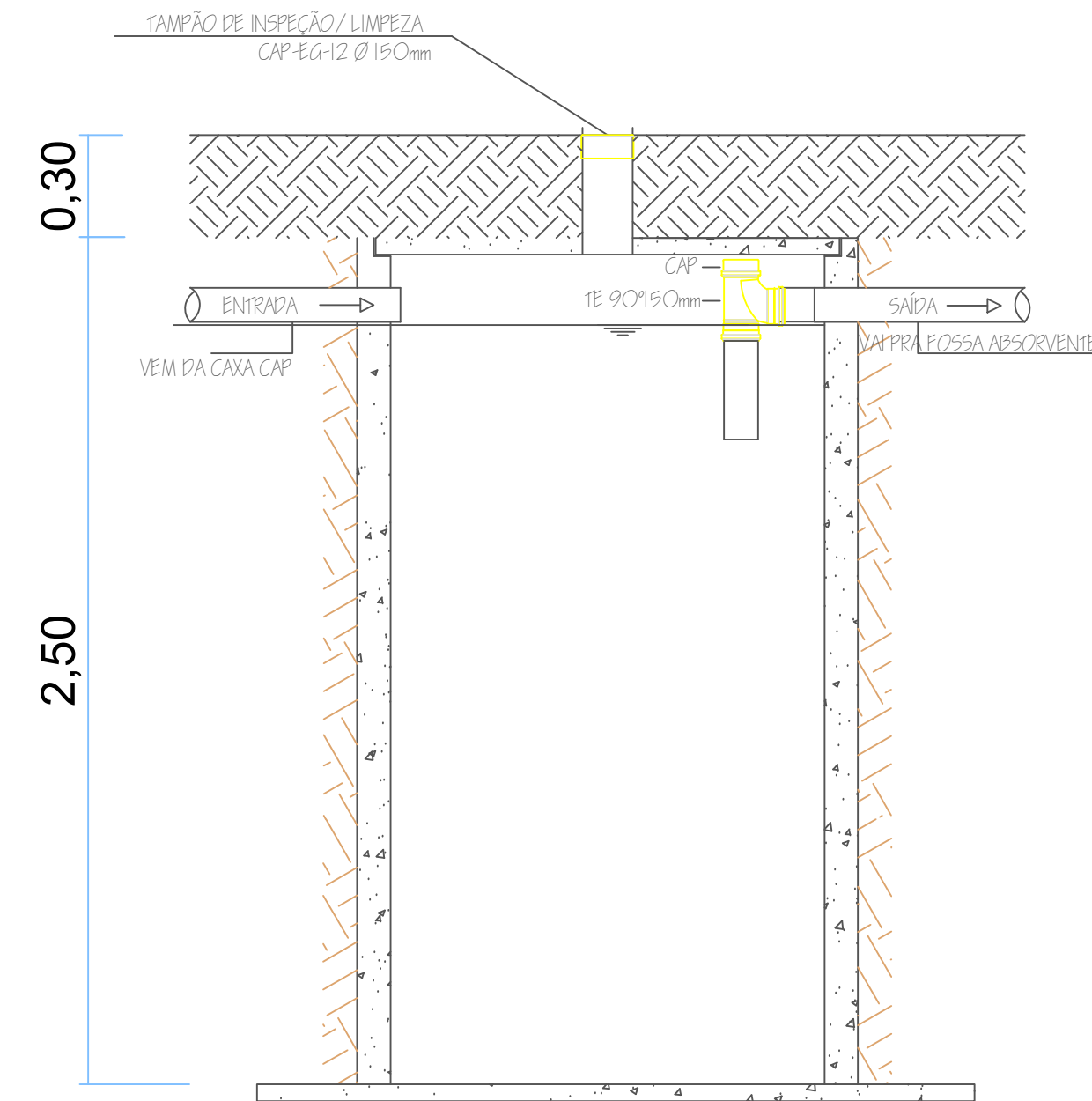
CORTE DD

DETALHE DA FOSSA ABSORVENTE (FA)
ESCALA 1:25



PLANTA

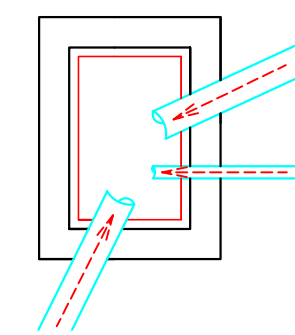
DETALHE DA FOSSA SÉPTICA (FS)



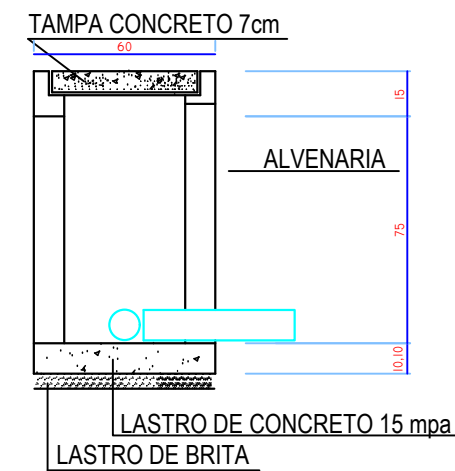
CORTE EE

DETALHE DA FOSSA SÉPTICA (FS)

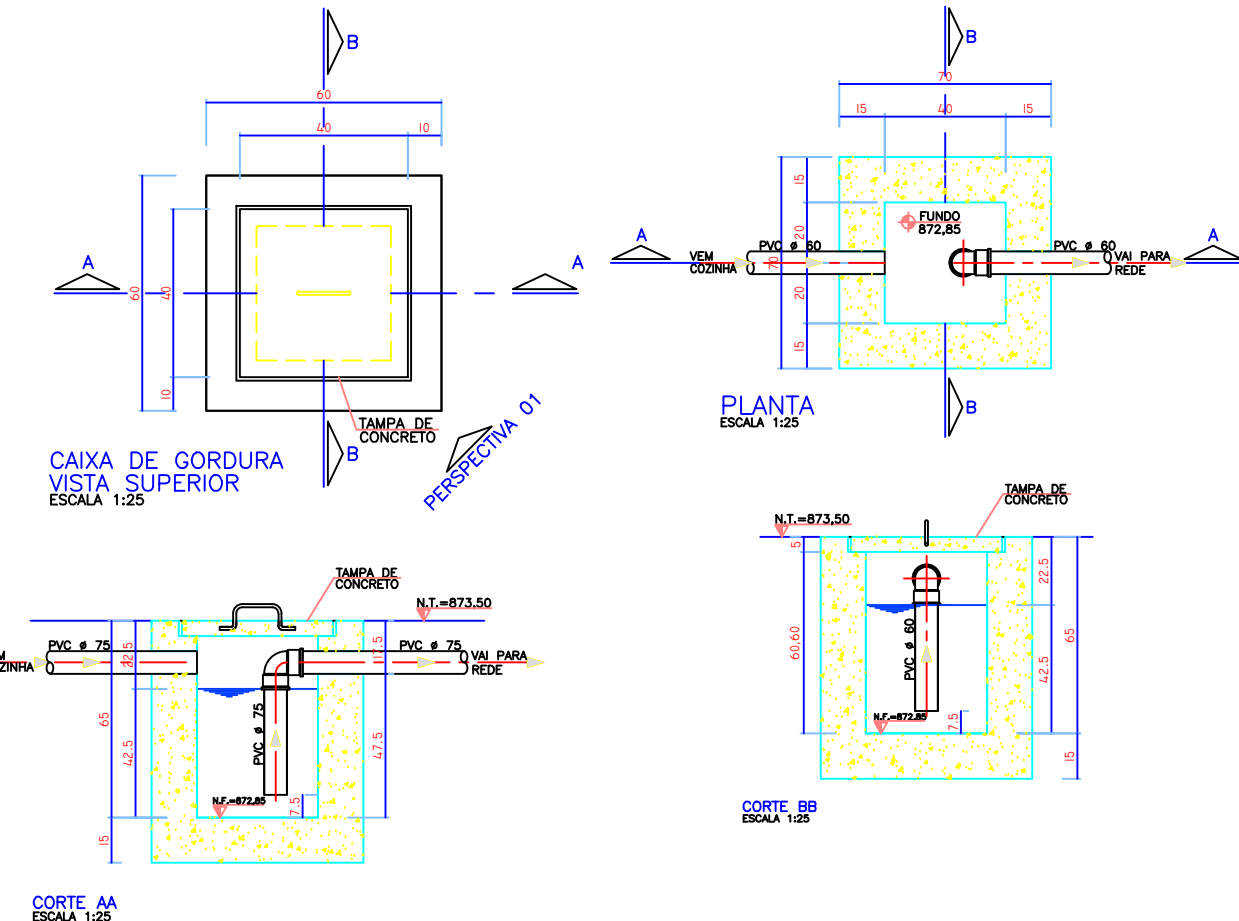
Detalhes Caixas



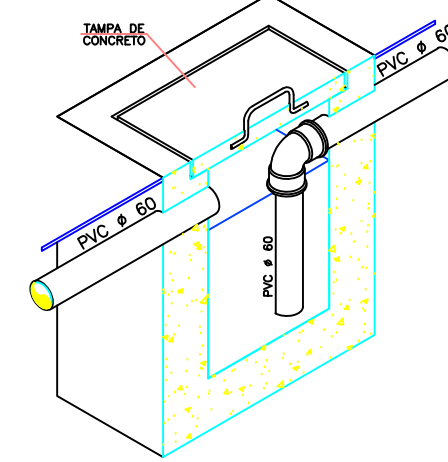
PLANTA



DETALHE DA CAIXA DE INSPEÇÃO A
Esc: 1/25



DETALHE DA CAIXA DE GORDURA
Esc: 1/25



Obra: PROJETO AMPLIAÇÃO POSTO DE SAUDE JUELINA HABERLAND			
Proprietário		Reservado Para Carimbos	
PREFEITURA MUNICIPAL DE VENTANIA - PR ADM. ANTONIO HELLY SANTIAGO CPF: 95.555.798/0001-69			
Projeto		PROJETO HIDRÁULICO	
Local		RUA IZALTINO SANTOS, Nº 147 Ventania - PR - Vila Santo Antonio	
Responsável Técnico		IEDO JOSÉ STIMAMIGLIO Engº Civil - CREA PR - 14.315/D	
Data		Escala	Desenho
ABRIL / 2020		Indicada	Jefferson Phillipi